

ACE FP210

NextGen Multi Activity Crane Capacity : 20 tonnes

Rough terrain and rugged, 4x4
NextGen pick 'n' move crane
for Piling Application

ACE INDIA'S NO. 1
CRANE BRAND



4x4

**PATENT
Pending**

Specifications

FP-210

LIFTING CAPACITY	20 Tonnes
ENGINE	Volvo Eicher (CEV Stage IV) Diesel Engine Model E483 CRDi, 4 cylinder, Water Cooled, Turbo Charged Engine with Electronic Control Unit (ECU)
Rated Power	101 hp at 2200 RPM
TRANSMISSION	Heavy duty, synchromesh with 12 forward and 2 reverse speeds and hi-low drive selector for creep speed
Axles	Front axle is rigidly mounted on the chassis. Rear drive axle is mounted with 2 nos. Leaf springs.
Drive	4 Wheel drive.
Clutch	Heavy duty, single, dry friction type hydraulic clutch.
Top Speed	35 KMPH on even metaled Road (without load)
Gradeability	40 % (unladen)
STEERING	Full power orbital with twin hydraulic double acting cylinders and 40° articulation on either side
Turning Radius	7.6 Mtrs. on outer rear wheels.
BRAKES	<ul style="list-style-type: none"> ● Dual Circuit Brakes ● Fully Pneumatic brakes on front and rear wheels. ● Parking brake is pneumatically operated, fail safe type
HYDRAULIC SYSTEM	<ul style="list-style-type: none"> ● Gear/Intra Vane type main pump ● Six spools control valve with built in Relief Valve (Heavy duty) ● Suction line has 100 mesh size strainer while return line is fitted with 25 micron full flow filter. ● Two double acting lift cylinders, two double acting steering cylinders and one double acting extension cylinder.
TELESCOPIC BOOM	4 part boom, 2 part hydraulically operated & synchronized and 4th part power extended.
BOOM LUFFING Range	-5° to + 70°

HOIST	3.5 Tonnes Line Pull Winch is driven by hydraulic motor and fitted with rope tensioner. Hoisting is provided through self adjusting hook block employing 6 falls of 13mm dia. Rope.
Auxiliary Winch	High speed auxiliary single line winch with 16mm dia rope and ball hook
ELECTRICAL SYSTEM	24v, Negative earth.
TYRES	
Front	12.00x20-18 PR (4 NOS.)
Rear	12.00x20-18 PR (4 NOS.)
Wheel Base	4300 mm
Wheel Track	1840 mm
SAFETY	<ul style="list-style-type: none"> ● Hose failure protection ● Audio over hoisting Indication ● Safety brakes on hoist ● Self-adjusting hook block ● Front and rear wheel guards
STANDARD EQUIPMENT	<ul style="list-style-type: none"> ● Runner for ball hook ● Front Outriggers ● ROPS fully enclosed wide view cabin ● Rear View Camera ● Front work lights ● Reflectors & rear view mirrors ● Tool Kit ● Cabin fan ● Wiper Motor ● Beacon rotating light ● Gauges : <ol style="list-style-type: none"> a) Water Temperature. b) Engine Oil Pressure. c) Fuel Gauge d) RPM meter cum hour recorder e) Air Pressure Gauge f) Speedometer ● Safe load indicator ● Over Hoist hydraulic cutoff
OPTIONAL EQUIPMENT	<ul style="list-style-type: none"> ● Flyjib (Max Capacity : 1.25 Tonnes) ● Spark arrestor ● Fire Extinguisher ● Front and side Proximity Sensors ● Cabin front glass protector ● Helper/Slinger Seat
OPERATING WEIGHT	
Front axle	9895 Kgs.
Rear Axle	10200 Kgs.
Total Weight	20095 Kgs.

Piling Application



Cage Handling



Concreting



Casing Removal

4x44



100% Swadeshi



- 1 Auxiliary Winch**
Heavy duty high speed Auxiliary winch for concreting application



- 2 Ball Hook**
Runner is provided with heavy duty ball hook for efficient single line high speed operation

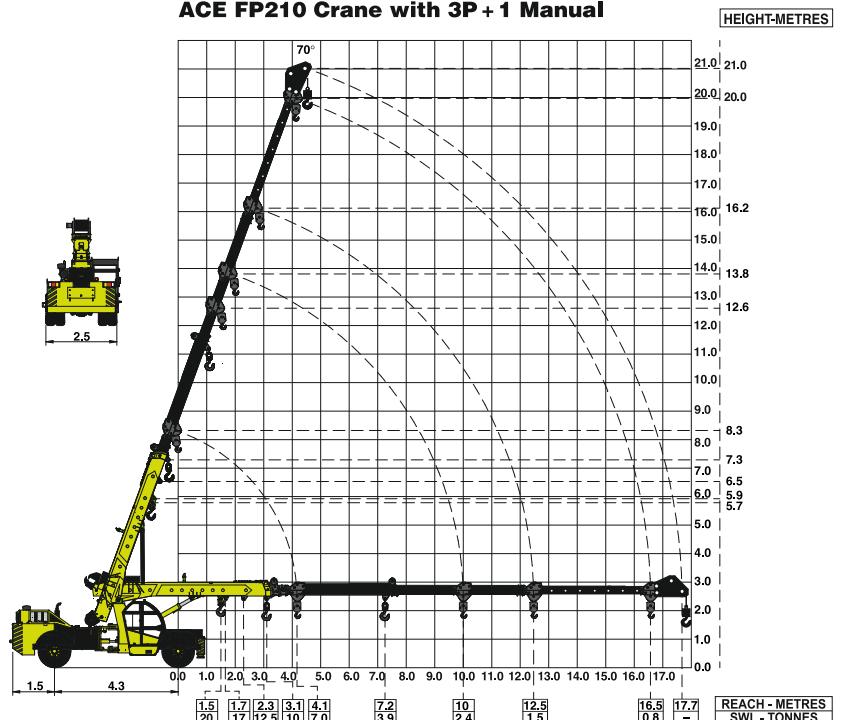


- 3 OUTRIGGERS**
Front Outriggers for added safety during high lift operations.



- 4 GROUND CLEARANCE**
High ground clearance of 300mm for easier rough terrain operation.

ACE FP210 Crane with 3P + 1 Manual



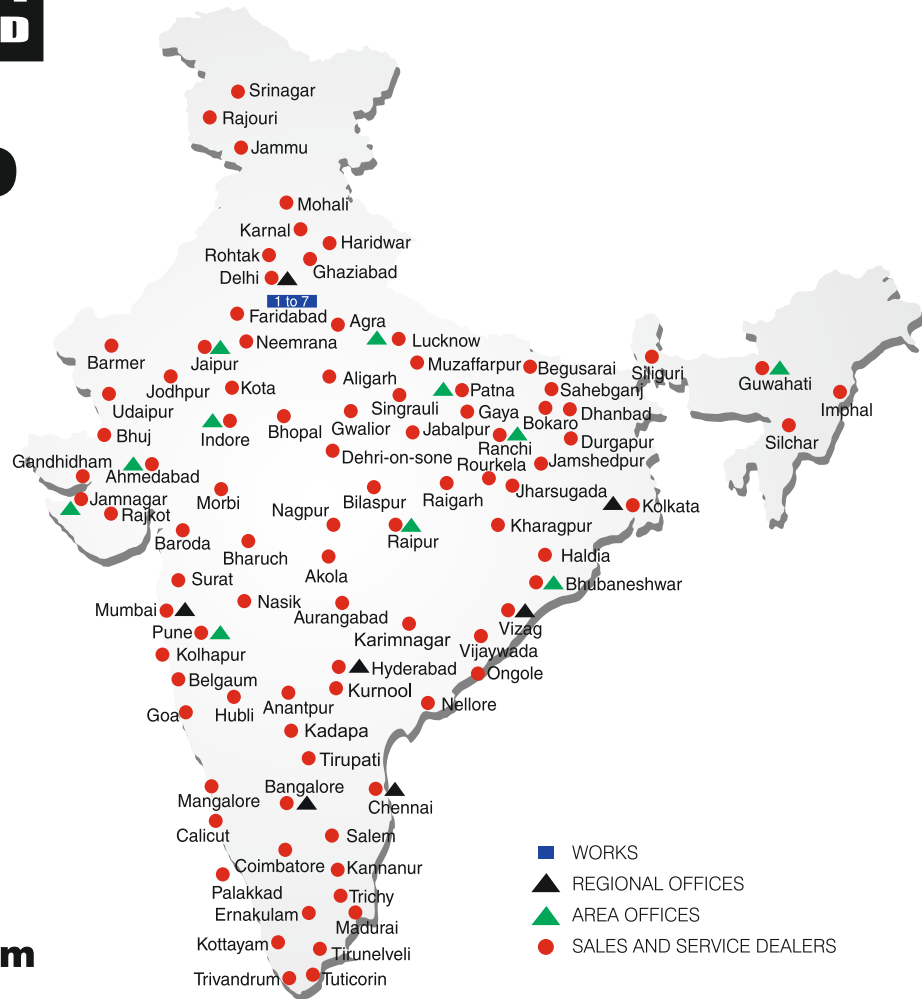
NOTE: • Rated loads are on the basis of operation on firm and level surface.
• Full rated lifting capacity available in articulated / steered condition.

BUILT TO PERFORM



**RELIABLE AND
DEPENDABLE
EFFICIENCY**

NETWORK



**Toll Free Help Line
1800 1800 004**

www.ace-cranes.com

MARKETING H.Q.

4th Floor, Pinnacle
Surajkund, NCR-121009
Ph. : +91-129-4550000
Fax : +91-129-4550022
E-mail: marketing@ace-cranes.com

REGISTERED OFFICE

Dudhola Link Road, Dudhola
Palwal-121102, Haryana
Ph.: +91-1275-280111
Fax: +91-1275-280133
CIN : L74899HR1995PLC053860

MUMBAI OFFICE

31, "Kalpataru Court"
Chembur, Mumbai - 400074
Ph.: +91-22-25206846, 25207070
Fax: +91-22-25207071
E-mail: acemumbai@ace-cranes.com

KOLKATA OFFICE

"Forma Towers" 84-A, Second Floor
AJC Bose Road, Kolkata - 700014
Ph.: +91-9038070630
E-mail: acekolkata@ace-cranes.com

CHENNAI OFFICE

1st Floor, "Alsa Regency", 165
Eldams Road, Alwar Pet
Chennai - 600018
Ph.: +91-44-24314253
Fax: +91-44-24314252
E-mail: acechennai@ace-cranes.com

HERE TO SERVE YOU.

SPARE PARTS & SERVICE

ACE has all India Sales and Service network operating out of all the major cities. These outlets are fully equipped to provide genuine spare parts and services by company trained engineers. These outlets are further supported by company officials based at Delhi, Mumbai, Chennai, Kolkata, Ahmedabad, Surat, Pune, Jaipur, Chandigarh, Ranchi, Raipur, Indore, Bhubneshwar, Lucknow, Jamnagar, Hyderabad, Bangalore, Guwahati, Patna, Vizag & Kochi.



Action Construction Equipment Ltd.

Contact:



ACE reserves the right to alter any specifications without prior notice. Dimensions, weights & capacities mentioned herein are variable by ± 5%. Accessories if shown are not part of the Standard Equipment.